



NEIGHBORHOOD INTERACTION



PUBLIC FAMILY SPACE



PRIVATE FAMILY SPACE

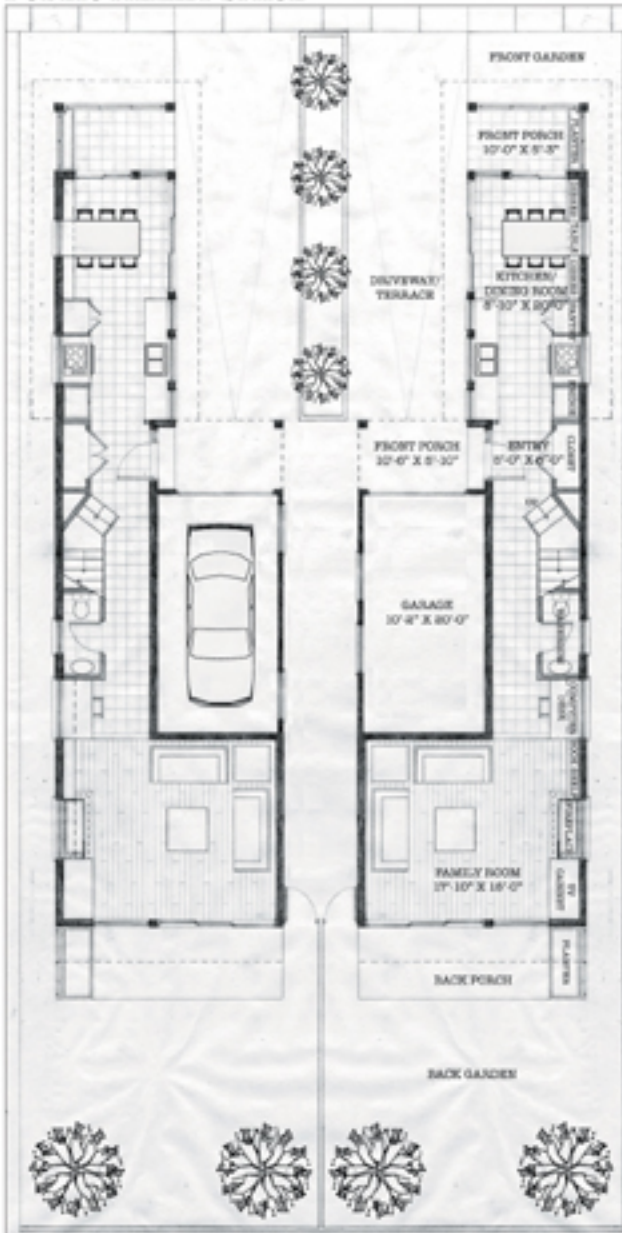
PDX-4
The PUBLIC/PRIVATE Family Home

The design stems from the desire to create a home that both nurtures family life and interacts with the neighborhood street-life. The house is divided into two major spaces with a services area in-between. The front of the house is a public environment where the family can interact with the street and neighborhood. This space is a single story bar adjacent to a long driveway that doubles as family public space. The back of the house is a private environment to foster family life. The backyard is left virtually un-programmed to accommodate personal family tastes. The second floor of the house retains some of both the public and private elements. The bedrooms are all privately located but the master bedroom has a large balcony from which to survey the street life.

The design also attempts to resolve much of the conflict between house and garage that is common in contemporary houses. The garage door and front door are located under the same porch to emphasize the importance of both pedestrian and automobile. The garage itself is partial tucked in the space of the house to minimize its facade. The driveway is long enough to act as both a parking space and a play space.

The entire house is designed to create "eyes on the street" a necessary element of neighborhood urban living that has been neglected in recent times. By connecting with the neighborhood while nurturing family life, this home creates the perfect balance between the PUBLIC and the PRIVATE.

Building Coverage:	1,180 sq.ft.
Ground Floor Area:	950 sq.ft.
Second Floor Area:	710 sq.ft.
Total Floor Area:	1,660 sq.ft.

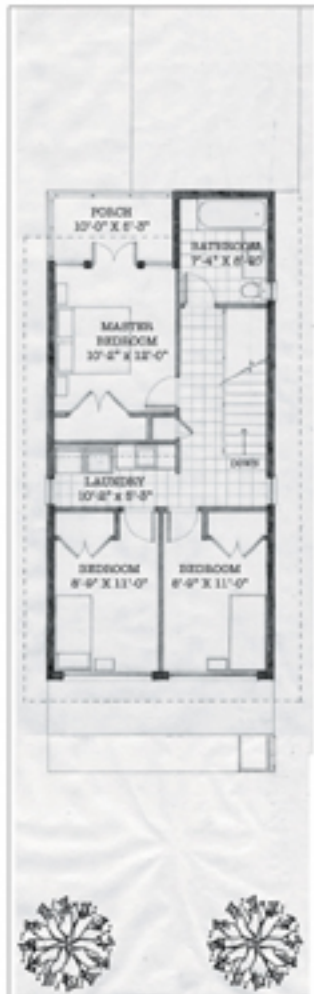


GROUND FLOOR PLAN

SCALE: 1/8" = 1'-0"



PROGRAMMED SPACES



SECOND FLOOR PLAN

SCALE: 1/8" = 1'-0"



NEIGHBORHOOD PLAN